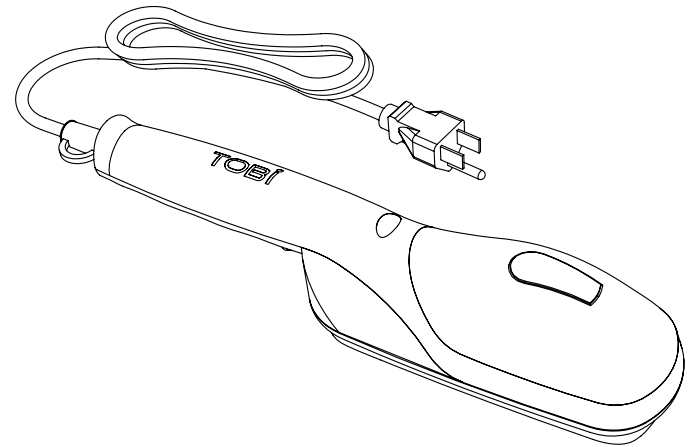


# TOBI<sup>®</sup>

---

## TRAVEL STEAMER

### INSTRUCTION MANUAL



**TOBI<sup>®</sup>**  
TRAVEL STEAMER

**Read this booklet thoroughly before using.**

---

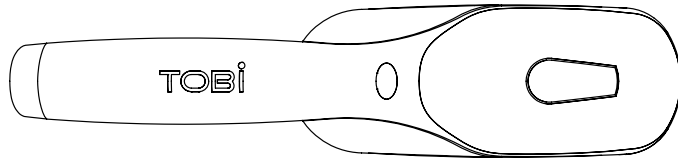
## WELCOME!

Thank you for purchasing your Tobi® travel steamer.

The Tobi® travel steamer is great for those quick touch ups when you are on the go.

Please read all safety instructions in this product manual before using the Tobi® travel steamer.

Keep this product manual for future reference.



---

## TABLE OF CONTENTS

<b>IMPORTANT SAFEGUARDS</b>	2
<b>KNOW YOUR Tobi® TRAVEL STEAMER</b>	5
<b>BEFORE FIRST USE</b>	6
<b>ADDING ATTACHMENTS</b>	6
<b>OPERATING INSTRUCTIONS</b>	7
<b>HOW TO STEAM</b>	8
<b>MAINTENANCE</b>	10
<b>CLEANING MINERAL DEPOSITS</b>	11
<b>WARRANTY</b>	12
<b>ARBITRATION AGREEMENT</b>	13

---

# IMPORTANT SAFEGUARDS

When using your Tobi® travel steamer, basic precautions should always be used, including the following:

## Read All Instructions:

1. To reduce the risk of contact with hot water and steam emitting from steam vents, always check appliance for leaks before each use. Do not use the Tobi® travel steamer if you see steam coming from anywhere besides the steamer surface.
2. This product features a grounding plug (3 prong) and works on 110v/60Hz of electricity.
3. Never yank cord to disconnect from outlet; instead, grasp plug and pull to disconnect.
4. Do not allow cord to touch hot surfaces. Let appliance cool completely before putting away. Loop cord loosely around appliance when storing.
5. Always disconnect appliance from electrical outlet when filling with water or emptying water, and when not in use.
6. Do not operate appliance with a damaged cord or if the appliance has been dropped or damaged. To reduce the risk of electric shock, do not disassemble or attempt to repair the appliance. Take it to a qualified service person for examination and repair. Incorrect reassembly or repair could cause a risk of fire, electric shock, or injury to persons when the appliance is used.
7. Do not use outdoors.

8. Use the Tobi® travel steamer only for its intended use.
9. Avoid contact with hot parts. Keep hands, hair and clothing you are wearing away from hot parts to prevent burns.
10. To protect against fire and injury from electric shock, do not immerse the Tobi® travel steamer in water or other liquids.
11. The Tobi® travel steamer is not a toy. Do not use the product by or near children.
12. Do not touch steam plate or brushes when attached and steaming--burns could occur.
13. Always disconnect from outlet when not in use and before cleaning. Allow appliance to cool before putting on or taking off parts, and before cleaning the appliance.
14. Never attempt to install attachments while appliance is plugged in and/or steam is coming out of steam plate.
15. Do not use accessory attachments that do not come with the unit, as this may result in fire, electric shock or injury to persons.
16. Do not let cord hang over edge of table or counter, or touch hot surface. The power cord should not be kinked or obstructed in any way.
17. Do not operate the Tobi® travel steamer without properly filling the water container.
18. Never attempt to steam clothing while on body.
19. Never push the steam button or direct steam toward anyone's face or close to skin. Doing so could burn or scald skin or eyes.

- 
20. To reduce the likelihood of circuit overload, do not operate another high-wattage appliance on the same circuit as your steamer.
  21. If an extension cord is absolutely necessary, a 15 ampere rated cord should be used. Cords rated for less amperage may overheat. Care should be taken to arrange the cord so that it cannot be inadvertently pulled or tripped over.
  22. To prevent steam from causing bodily injury or damage to surface, never lay steamer on floor or other surface while turned "on".
  23. NEVER USE DETERGENT, CLEANING CHEMICALS, SALT, PERFUME, DYES, OR ANYTHING OTHER THAN WATER IN YOUR STEAMER'S WATER TANK. Some of these substances are highly flammable which could result in bodily harm or death and some additives will corrode or clog internal parts.

## SAVE THESE INSTRUCTIONS!

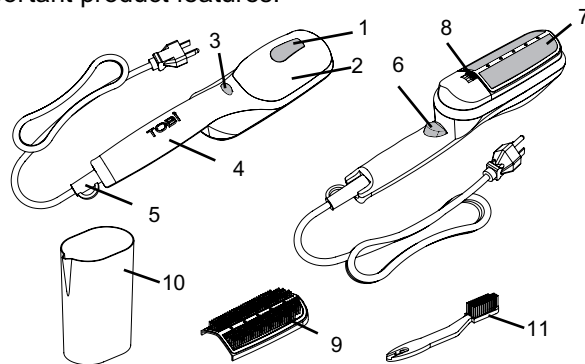
HOUSEHOLD USE ONLY

---

## KNOW YOUR Tobi® TRAVEL STEAMER

### MAIN PARTS

Please review the following diagram that shows important product features:



1. Water tank plug
2. Shatterproof water tank
3. Power indicator-light turns red when steamer is plugged in, light turns off when ready for use
4. Comfortable, easy grip handle
5. Cord protector
6. Steam release button
7. Flat Brush attachment
8. Slide button-for releasing attachments
9. Upholstery Brush attachment
10. Filling cup-for easy pouring into water tank
11. Detail Brush-for cleaning in small areas

---

## BEFORE FIRST USE

1. Remove any packaging materials from the appliance.
2. Fill the water tank according to the **OPERATING INSTRUCTIONS**.
3. Add attachments according to the **ADDING ATTACHMENTS** section.

## ADDING ATTACHMENTS

### HOW TO CHANGE THE FLAT BRUSH OR UPHOLSTERY BRUSH ATTACHMENTS.

WE RECOMMEND YOU LEAVE THE FLAT BRUSH ATTACHMENT FOR IMPROVED WRINKLE REMOVAL.

1. Select an attachment. The upholstery brush attachment is great for steaming drapery and upholstery. The flat brush attachment works best for linen, wool, and soft fabrics such as silk.
2. To detach: Unplug and allow steamer to cool completely before detaching. Next, push the slide button down and lift off attachment. See **Figure 1**.

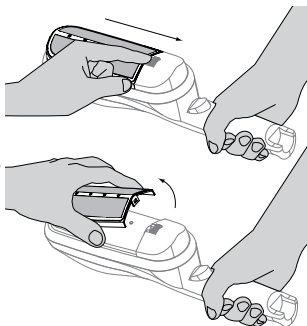


Figure 1

3. To attach: Align top of attachment into top of steam plate and press lightly to snap into place

---

## OPERATING INSTRUCTIONS

### GETTING READY TO STEAM

#### Adding Water:

1. Make sure steamer is unplugged and cool.
2. Remove the water tank plug. See **Figure 2**.
3. Add water to the water tank using provided cup. We recommend the use of distilled or de-mineralized water to prolong the life of your steamer. However, tap water is okay.
4. The maximum volume is about 3 oz. or 100 ml.
5. Put plug back into top of water tank, ensuring it is tightly sealed.

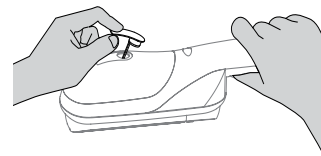


Figure 2

Follow **HOW TO STEAM** instructions on next page.

---

## HOW TO STEAM

### Operating Steamer:

1. Add water according to **OPERATING INSTRUCTIONS** section.
2. Plug steamer cord into electrical outlet. Power indicator light will glow red.
3. When the Power indicator light goes off, the steamer is ready to use.
4. Run steam plate or brush attachment evenly over area to be steamed, pumping the steam button on the handle up and down to release steam. When steaming, touch material lightly with steam plate or brush attachment and move up and down to remove wrinkles. Continue to pump the button up and down to maintain a consistent flow of steam. It is important that you make contact with the garment and/or fabric you are steaming.
5. The steamer can be used in any direction, horizontally or vertically.
6. If water gets low, unplug steamer and allow to cool completely. Next, remove water tank plug and add more water without exceeding the maximum amount of about 3 oz. Re-insert water tank plug securely and resume use. **DO NOT ALLOW THE WATER TANK TO RUN ON DRY WHILE STEAMING, AS THIS COULD DAMAGE YOUR STEAMER.**
7. When steaming, your steamer's power indicator light will repeatedly go off and on. This is a normal part

---

of its functioning as it constantly adjusts itself to the optimal temperature.

### For Best Results:

- **Some articles can be steamed better by steaming from the underside.**
- **Pants may easily be steamed holding them by the cuff.**
- **When steaming, touch material lightly with steam plate or brush attachment and move up and down to remove wrinkles. It is important that you make contact with the garment and/or fabric.**
- **The Tobi® travel steamer will not remove stains from garments.**
- **Never steam clothes while wearing them.**

The Tobi® travel steamer works on most fabrics, including silk, denim, cotton, polyester and wool. PLEASE REFER TO LABEL ON ITEM OF CLOTHING TO CHECK IF GARMENT CAN BE STEAMED. IN GENERAL, SOME FABRICS, E.G., LEATHER, SUEDE AND VELVET MAY NOT BE SUITABLE FOR STEAMING.

TO ENSURE YOUR GARMENT IS SUITABLE FOR STEAMING, STEAM A SMALL PART OF THE INSIDE OF THE GARMENT TO TEST THAT IT DOES NOT DAMAGE THE FABRIC BEFORE STEAMING THE ENTIRE GARMENT OR FABRIC.

---

## MAINTENANCE

After use, unplug the steamer and allow to cool down completely. Remove plug from water tank and empty all water.

### Never use additives

Use of distilled or de-mineralized water will reduce the need to clean your steamer and will prolong its life. However, ordinary tap water may be used as well. Use only water (preferably distilled or de-mineralized-although tap water is okay) in your steamer's water tank.

Additives such as cleaning agents, detergent, salt, per-fumes and dyes should never be added to the water tank.

Some of these substances are highly flammable which could result in bodily harm or death and some additives will corrode or clog internal parts.

### Storing the Tobi® Travel Steamer

Before storing your Tobi® travel steamer, empty all water from the unit. Water can become stale with time and may clog internal parts.

---

## CLEANING MINERAL DEPOSITS

One common problem that may occur with a steamer is mineral deposits caused by a high mineral content in many municipal water supplies. Mineral residue inside of the internal pipes and heater can cause intermittent steaming or, in some cases, no steaming at all.

**NOTE:** To reduce or eliminate the occurrence of mineral deposits, we recommend the use of de-mineralized or distilled water in the unit. However, regular tap water can also be used.

The recommendations that follow can be used to reduce mineral deposits. If not using de-mineralized or distilled water, we recommend you follow this procedure monthly.

1. Make sure the unit is unplugged and cool.
2. Mix a solution of 50% vinegar and 50% water. 2 ounces of this solution will be sufficient.
3. Remove the water tank plug and slowly pour the mixed solution into the water tank and replace the water tank plug.
4. Let stand for 40 minutes.
5. Drain the solution out of the water tank unit into a sink or tub.
6. Pour clean water in the tank and drain. Repeat this step until the vinegar odor dissipates.
7. Reassemble the unit and operate normally.

---

## ONE YEAR LIMITED WARRANTY

Your Tobi® travel steamer is warranted to be free from defects in materials and workmanship for one year from the original purchase date. Should the product have a defect in material or workmanship, we will repair or replace it without charge to you (a shipping and processing fee may apply).

This warranty does not cover damage caused by accident, misuse or any use other than as intended and described in this product manual, or damage resulting from failure to maintain and clean this product as specified in this product manual. This warranty applies only to the original purchaser of the Tobi® travel steamer.

Contact Info for Warranty Service :

Tobi®  
P.O. Box 3472  
Hollywood, CA 90028  
1-800-796-4431  
www.thetobi.com

© 2007-2008 Tobi USA, LLC. All Rights Reserved.  
Patents Pending.

---

## ARBITRATION AGREEMENT

THIS ARBITRATION AGREEMENT ("AGREEMENT") AFFECTS YOUR LEGAL RIGHTS AND REMEDIES BY PROVIDING THAT DISPUTES BETWEEN YOU AND THE SELLER OF THIS PRODUCT ("COMPANY"), MUST BE RESOLVED THROUGH BINDING ARBITRATION, RATHER THAN IN A COURT.

PLEASE READ THIS AGREEMENT CAREFULLY. YOU ACCEPT THE TERMS OF THIS AGREEMENT BY RETAINING THE PRODUCT(S) SHIPPED IN CONNECTION WITH THIS AGREEMENT (THE "PRODUCT") FOR MORE THAN FOURTEEN (14) DAYS AFTER RECEIPT. IF YOU DO NOT AGREE TO THE TERMS OF THIS AGREEMENT, YOU MAY RETURN THE PRODUCT TO COMPANY WITHIN FOURTEEN (14) DAYS OF RECEIPT AT NO COST TO YOU.

1. RESOLUTION OF CLAIMS OR DISPUTES. Any claim or dispute between you and Company (or any of Company's subsidiaries or affiliates) arising out of or relating in any way to the Product or this Agreement shall be resolved through final, binding arbitration. This arbitration obligation applies regardless of whether the claim or dispute involves a tort, fraud, misrepresentation, product liability, negligence, violation of a statute, or any other legal theory. Both you and Company specifically acknowledge and agree that you waive your right to bring a lawsuit based on such claims or disputes and to have such lawsuit resolved by a judge or jury.

2. LIMITATION OF LEGAL REMEDIES. All arbitrations under this Agreement shall be conducted on an individual (and not a class-wide) basis, and an arbitrator shall have no authority to award class-wide relief. You acknowledge and agree that this Agreement specifically prohibits you from commencing arbitration proceedings as a representative of others or joining in any arbitration proceedings brought by any other person.

3. ARBITRATION PROCEDURES.

a. Before commencing any arbitration proceedings under this Agreement, you must first present the claim or dispute to Company by calling 818-217-2500 and asking for the Legal Department and allowing Company the opportunity to resolve the claim or dispute. If your claim or dispute is not resolved within sixty (60) days, you may commence



